

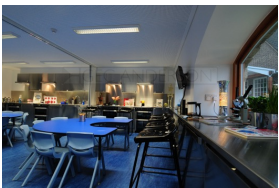
**STAINLESS STEEL PROVES A POPULAR CHOICE FOR FITZJOHN'S PRIMARY SCHOOL**



Lipped front edge profile and stainless steel splashbacks



14 linear metres of stainless steel worktops to external walls



Stainless steel counters with 40mm edge profile (edge 7)



Stainless steel worktops, sinks and cabinet fronts

---

|                    |   |
|--------------------|---|
| <b>Building:</b>   | Fitzjohn's Primary School - New Practical Space |
| <b>Sector:</b>     | Schools   |
| <b>Room Type:</b>  | Class / art rooms                               |
| <b>Specifier:</b>  | Curl la Tourelle Head Architecture              |
| <b>Contractor:</b> | Woodbar Limited                                 |

---

Stainless steel worktops, sinks, splashbacks and shelving, from GEC Anderson, have been installed at The Lab at Fitzjohns Primary School in Hampstead. They provide a durable, professional looking kitchen area as well as adding valuable light to an otherwise dark space.

The work carried out in the Lab, a science and cookery facility, is part of a phased transformation of the school, involving a complex programme, designed to cause minimum disruption to the occupied school.

The school is split into four blocks; the main block being listed and over 150 years old. The Lab is located on the ground floor of this block in an old culvert space which had been open to the elements and was used as a dumping area!

Frank Swan, Bursar for Fitzjohn Primary said, "The Lab was built to put an additional focus on science in the school and to have a dedicated learning space for the subject."

Founded in England in 1962, GEC Anderson has pioneered the development of made-to-measure stainless steel products. Today, the company's range also includes standard and modular stainless steel options. Products include sinks, worktops, cabinets, shelving, splashbacks, doors and sanitaryware for use in domestic, commercial and specialist environments. All products are manufactured to ISO 9001 and backed by a comprehensive support service from planning and product specification to installation and maintenance.