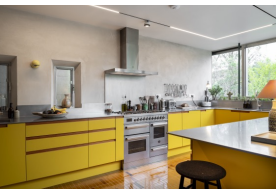




Integral stainless steel sinks and back upstand



Splashback behind cooker is also fully integrated with worktop



Peninsular worktop with breakfast bar



U-shaped stainless steel worktops with extra-thin edge profile and Patina finish

Sector: Private
Room Type: Kitchen
Specifier: Office Nicholas Ashby

A recent worktop installation by GEC Anderson reflects the strong design intent of a spacious London kitchen. Featuring prominent yellow cabinets that sit below the made to measure stainless steel worktops, the kitchen also has bare plaster walls and brightly glazed floor tiles.

Thin worktop edge profiles add to the dramatic look as does the 'Patina' surface finish of the worktops that was chosen to match the [stainless steel] window system. Matching window sills, splashbacks and planter area were also included in this highly individualistic design creation.

As with most renovations, walls and angles were irregular. GEC Anderson were instructed to template and install their worktops which fitted perfectly.